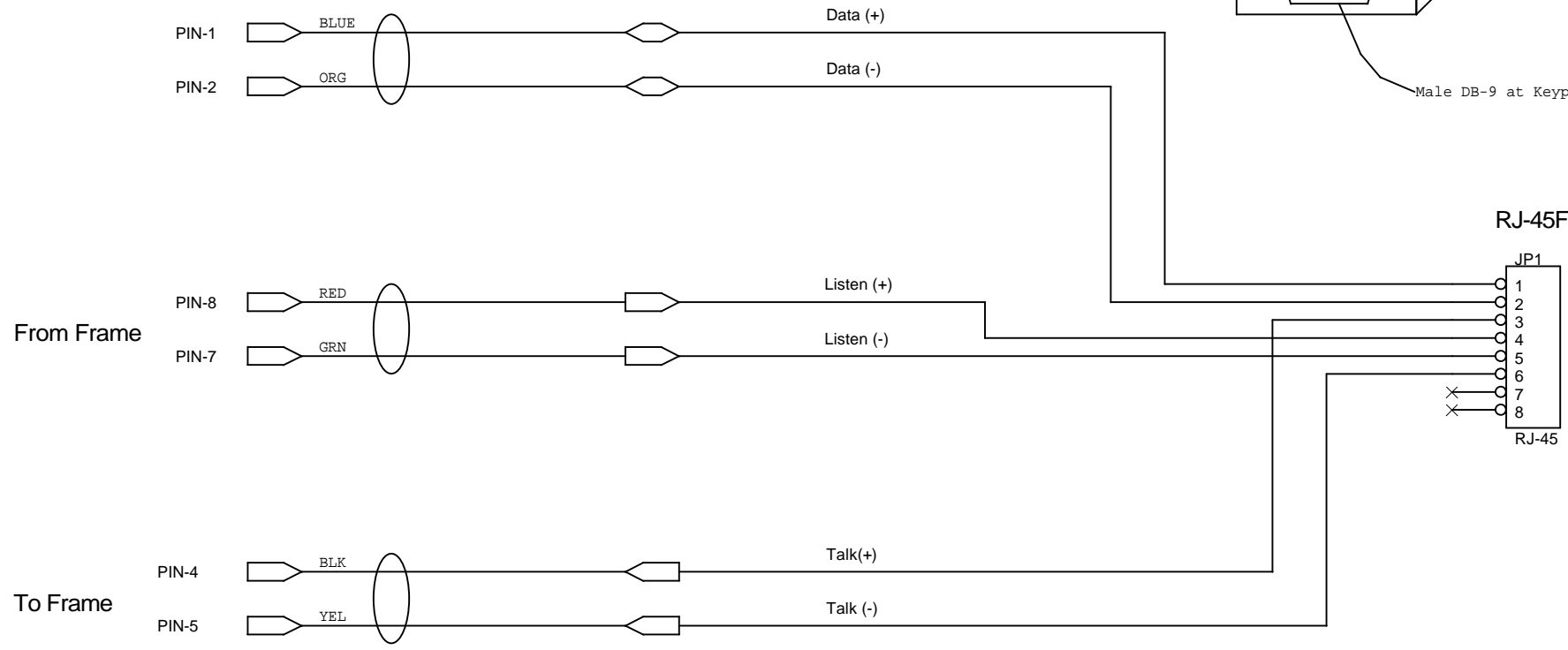
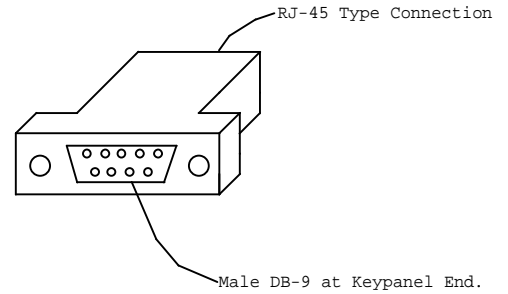


Pair-1 Port Output (Listen or "FROM" frame)
 Pair-2 DATA
 Pair-3 Port Input (Talk or "TO" frame)
 Pair-4 Not Used

ADAM Keypanel
 DB-9M



Drawing shows the wiring diagram which will allow Telex ADAM Keypanels to connect using RJ-45 T568B standard cables and accessories. The pin-out choices allow Clear-Com Matrix-3 accessories to operate as well since the audio pairs were decided on in accordance with the Clear-Com standard.

Drawn by: Andrew McHaddad

Audio Specialties Group (ASG)		
Title Telex ADAM RJ45 Convention - Keypanel End		
Size A	Document Number 1001-1	Rev 1
Date: Thursday, April 25, 2002	Sheet 2	of 3